

## INTERNATIONAL DYNETICS SUPER T BULKHEAD PACKER HI DENSITY BAG PACKER

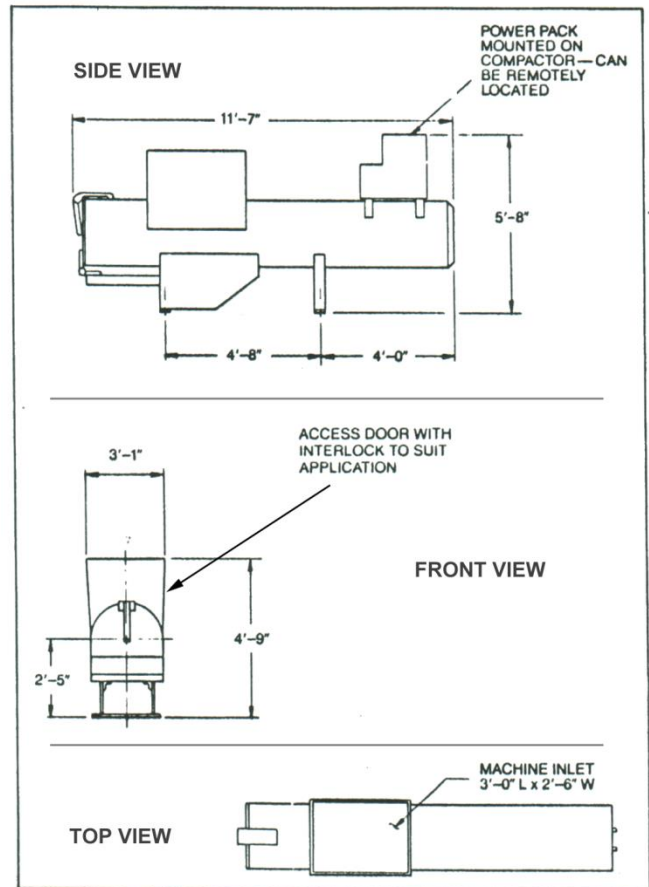
### GENERAL DESCRIPTION

A high-density compactor for bulky refuse disposal, the Super T is the big brother of the Model 10T. It can be used in any application where large amounts of high volume trash, such as boxes, packing and garbage must be disposed of. Such applications would include all types of retail stores, restaurants, supermarkets, manufacturing plants, office buildings, hospitals, schools and other institutions.



### SPECIFICATIONS

	Super T
Chamber Capacity	½ Cubic Yard
Ram Face Pressure	142 psi
Compaction Force	60,000 lbs
Volume Displacement	.5 cubic yard/minute
Cycle Time	60 seconds
Overall Dimensions (L x W x H)	11' 7" L x 3' 1" W x 5' 8" H
Weight	3,400 lbs
Container Type	Heavy duty bags
Motor Power, AC, 60 Hz	208/220/440
Motor Horsepower	7.5 HP



**BUILT WITH PRIDE  
IN YORK, PA USA**

Due to continual product improvement PRECISION MACHINERY SYSTEMS reserves the right to change specifications without notice. The information and pictures used in the document are for illustrative purposes only.