

# AUTO-PAK GOBBLER SERIES

## BAG PACKERS FOR HI RISE BUILDINGS

### GENERAL DESCRIPTION

The Gobbler Series Trash Compactors are bag packers normally installed in below grade trash rooms, used in conjunction with a trash chute system in Hi Rise Apartment Buildings. The units can also be hand fed. The unit typically compacts and extrudes trash into bags, but barrels, trash cans, etc. can also be used. Single or multiple bags are available. Using the multiple bag system, the unit will compact and extrude up to 500 lbs. of trash before bag removal is required. The slug of compacted trash is simply broken at segmented points and tied off to encase each segment. This system is ideal for times when the machine may be unattended, such as over weekends, etc. Operation is completely automatic, being activated by an electric eye which reacts to the presence of trash in the hopper. The system automatically shuts down when the receptacle is full.

### MODEL SELECTION

There are three standard models in the series: The Gobbler 1, Gobbler 2 and Gobbler 16.

- **The Gobbler 1** is an extremely practical, compact trash compactor designed to meet the restricted floor space common in many apartment building refuse rooms.
- **The Gobbler 2** is a larger trash compactor designed for higher volumes (100+ apartments).
- **The Gobbler 16** provides a heavy duty solution to waste handling problems for extremely large volumes.

All three trash compactor are equipped with industry standard components, designed for long life and low maintenance. Each machine comes with an electrically interlocked hopper door, located on the front of the hopper, for service access.

**BUILT WITH PRIDE  
IN YORK, PA USA**



**GOBBLER 1**



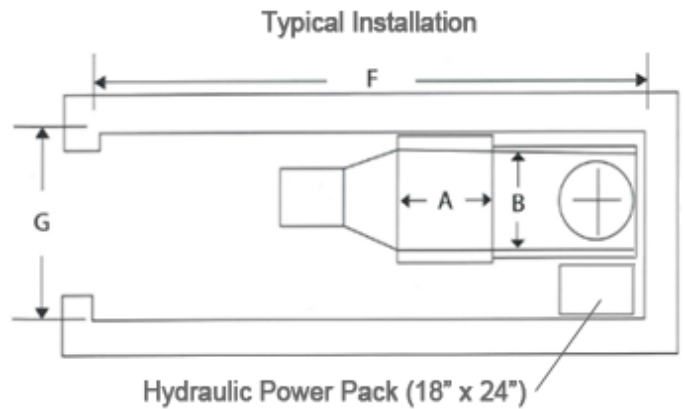
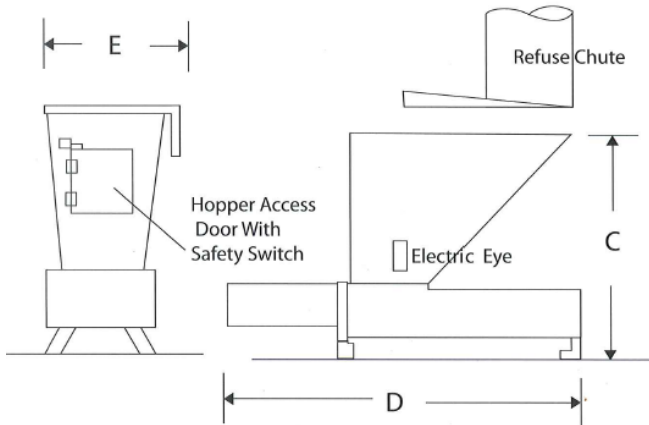
**GOBBLER 2**



**GOBBLER 16**

## SPECIFICATIONS

	Gobbler 1	Gobbler 2	Gobbler 16
Chamber Capacity	2.9 cf	3.0 cf	3.3 cf
Ram Face Pressure (N)	94 psi	130 psi	143 psi
Ram Face Pressure (M)	136 psi	166 psi	181 psi
Compaction Force (N)	22,600 lbs	32,400 lbs	32,400 lbs
Compaction Force (M)	37,680 lbs	41,230 lbs	41,230 lbs
Volume Displacement	9.6 cy/hr	11.1 cy/hr	14.6 cy/hr
Motor	5 HP	5 HP	7.5 HP
Motor Power, AC, 60 Hz	208,230,460V, 3Ph, 4 Wire	208,230,460V, 3Ph, 4 Wire	208,230,460V, 3Ph, 4 Wire
Control System, AC	115 V Fused	115V Fused	115V Fused
Cycle Time	40 seconds	37 seconds	30 seconds
Cylinder Diameter	4"	5"	5"
Reservoir Capacity	10 gallons	10 gallons	10 gallons
Overall Dimensions (L x W x H)	75" x 26" x 67"	98" x 37.5" x 64.5"	113" x 31" x 68"
Weight	1,550 lbs	1,950 lbs	2,000 lbs



## DIMENSIONS

	Inlet Length	Inlet Width	Machine Height	Machine Length	Machine Width	Room Length	Room Width
	A	B	C	D	E	F	G
Gobbler 1	1' – 7 ½"	2' – 0"	5' – 7"	6' – 3"	2' – 2"	9' – 3"	4' – 2"
Gobbler 2	1' – 7 ½"	2' – 0"	5' – 4 ½"	8' – 2"	3' – 1 ½"	11' – 2"	5' – 0"
Gobbler 16	1' – 6 ½"	1' – 9 ½"	5' – 8"	9' – 5"	2' – 7"	12' – 5"	4' – 7"

Due to continual product improvement PRECISION MACHINERY SYSTEMS reserves the right to change specifications without notice. The information and pictures used in the document are for illustrative purposes only.